



# A New Way to Virtualize

**Christian Wallner**

CTO



# SCALE COMPUTING

HCI SOLUTIONS FROM THE DATA CENTER TO THE EDGE SINCE 2012

## BUILDING THE FUTURE



## HELPING CUSTOMERS IN EVERY INDUSTRY



## AROUND THE WORLD

Customer, partner, & support footprint



## ESTABLISHING TECHNOLOGY ALLIANCES



## RUNNING APPLICATIONS WHERE YOU NEED

Maximize uptime beyond **99%**

Improve operational efficiency **50%**

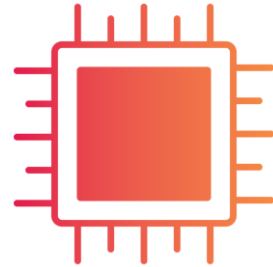
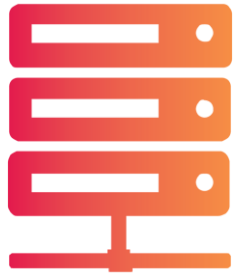
Reduce overall costs **70%**



# HYPERCONVERGENCE

## WHAT IS IT?

**Hyperconvergence** or **Hyperconverged Infrastructure (HCI)**: *Noun* - The integration of the compute, storage, and virtualization layers of infrastructure into a single solution architecture.



# // SC//HYPERCORE

## PRODUCT OVERVIEW

### Simplicity

- Unified management
- Pre-configured storage
- Deploy in < 1 hour\*

### Availability

- Self-healing
- Backup/replication
- DRaaS



### Scalability

- From single node
- Seamless scale-out
- Mix-and-match nodes

### Affordability

- Complete stack
- Simple software licensing
- Low price, lower costs

\* Time varies depending on design and configuration



# SCALE COMPUTING FLEET MANAGER

CENTRALIZED FLEET-WIDE MANAGEMENT

Simplicity is engineered into everything we do.

Scale Computing Fleet Manager is the cloud-based starting point for managing your global fleet of clusters running Scale Computing HyperCore.

The login page features the Scale Computing logo at the top. Below it are input fields for 'Email' and 'Password', followed by a blue 'LOGIN' button. A link for 'forgot password?' is provided, along with a note: 'Don't you have an account, sign up.' Below this is an 'or' separator and two social login buttons: 'Login with Google' and 'Login with Microsoft'.

The desktop monitor displays the 'Clusters' management interface. It features a table with columns for Name, Health, Nodes, VMS, Storage, Memory, CPU, and Version. The table lists various clusters with their respective health statuses (e.g., Disconnected, Warning, Notice, Info, Healthy) and resource usage metrics. A search bar and '+ Add Cluster' button are visible at the top right of the table.

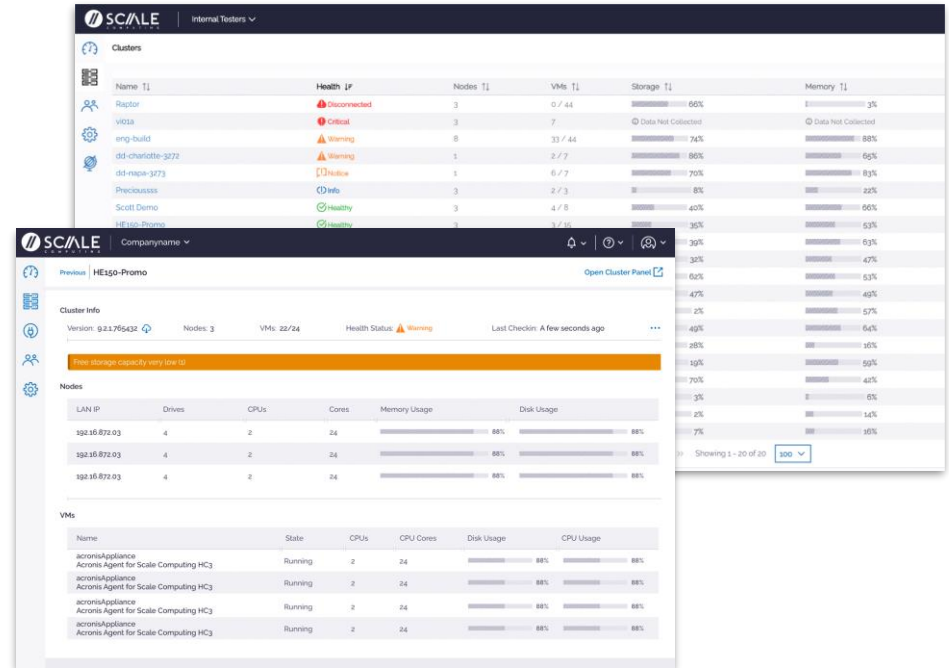
The smartphone displays a mobile view of the interface. It shows a 'Health Status' summary with a bar chart indicating the number of clusters in different health states: 1 Critical (red), 3 Warning (orange), and 3 Notice (yellow). Below this is a 'Health Status' section with a pie chart and a legend for 'Info 1', 'Notice 3', and 'Warning 3'.

# SC//FLEET MANAGER

## EASILY MANAGE MULTIPLE CLUSTERS

SC//Fleet Manager makes monitoring the health of your entire infrastructure deployment easier than ever.

- Centralized management for all deployments
- Drill down from full fleet to individual VMs
- Proactive alerting, highlighting areas that need attention
- Single Sign-on (Microsoft & Google supported)
- Firmware upgrade management
- Monitor individual hardware devices and health within a cluster
- Monitor VM status, Disk Usage and CPU utilization from the Fleet Management interface
- One-click access to SC//HyperCore





# SCALE COMPUTING PLATFORM

HCI SOLUTIONS FROM THE DATA CENTER TO THE EDGE SINCE 2012

## SC//PLATFORM

### SC//HYPERCORE



STORAGE



SERVERS



HYPERVERSOR



DISASTER  
RECOVERY

VIRTUAL SERVERS  
VIRTUAL DESKTOPS  
BUSINESS RESILIENCE  
HYBRID CLOUD

VIDEO SURVEILLANCE  
CONTAINERS  
ROBO  
IOT

### SC//FLEET MANAGER



MANAGEMENT & ORCHESTRATION AT SCALE

CENTRALIZED MANAGEMENT  
PROACTIVE ALERTING  
SINGLE SIGN-ON

FIRMWARE UPGRADE MGMT  
ZERO-TOUCH PROVISIONING  
ACCESSIBILITY

ON-PREMISES HARDWARE

CLOUD-MANAGED





# SC//PLATFORM ADVANTAGES

SIMPLE, AVAILABLE, SCALABLE, AFFORDABLE



- Fits any size deployment from edge to data center
- Self-healing to tolerate component failure
- Intelligent storage pooling – Nothing to configure
- Hyper-Efficient I/O path – No VSA architecture
- Hypervisor Included – No 3<sup>rd</sup> party licensing
- 24/7/365 in-house ScaleCare Support
- Cloud integration with Google Cloud Platform
- Native Backup/DR features and DRaaS capabilities
- No Expertise Required (Storage, HA, Virtualization, DR)
- Flexibility in Building Clusters with Differing Nodes





# VMWARE CUSTOMERS SPEAK OUT

SPICEWORKS ZIFF DAVIS SURVEY W/ CURRENT VMWARE USERS

- *Scale Computing commissioned a new survey of IT professionals in the US and the UK using VMware*
- *See what those users had to say, and how it changed from 2021*





# RELIABILITY

“VMWARE IS UNRELIABLE”

VMware organizations suffered from an average

**34  
HOURS**

of downtime in 2023.

This is **5 hours more** than in 2021.

Downtime events last for about 7 hours on average. Aberdeen research has found that an hour of downtime can easily reach six figures in costs.





# VALUE

“DELIVERS POOR VALUE”

2023 results showed that nearly half of surveyed customers say...

The value of VMware for the money is **below expectations.**

2



40%

of customers rated VMware as **below expectations** in at least one area.  
Compared to 33% in 2021

30%

of customers rated value for money as a factor **below expectations.**  
Compared to 36% in 2021.



# COMPLEXITY

“COMPLEX AND PAINFUL TO MANAGE”

In **2021** users spent **12.3 hours** a week on average managing and patching VMware solutions.



**100%**  
of customers needed  
to call support services at  
some point

In **2023** this only got worse,  
with users needing to spend **16.8 hours** a  
week  
on average managing and patching  
VMware solutions.



# CORPORATE CHANGES

## BROADCOM'S ACQUISITION OF VMWARE

### European Commission Approves Broadcom's Acquisition of VMware

NEWS PROVIDED BY  
Broadcom Inc. →  
12 Jul, 2023, 06:05 ET

SHARE THIS ARTICLE



SAN JOSE, Calif., July 12, 2023 /PRNewswire/ -- Broadcom Inc. (NASDAQ: AVGO), a global technology leader that designs, develops and supplies semiconductor and integrated software solutions, received conditional approval today from the European Commission to complete its acquisition of VMware, Inc. (NYSE: VMW).



Deals

### Broadcom's \$61 billion VMware deal wins conditional EU antitrust OK

By Foo Yu

July 12

updated a month ago



39%

Of customers are concerned about the potential acquisition.

VMware has stated that only 600 of their biggest accounts will be prioritized.

4





# BROADCOM'S NEW FOCUS

SOME VMWARE CUSTOMERS MORE VALUABLE THAN OTHERS

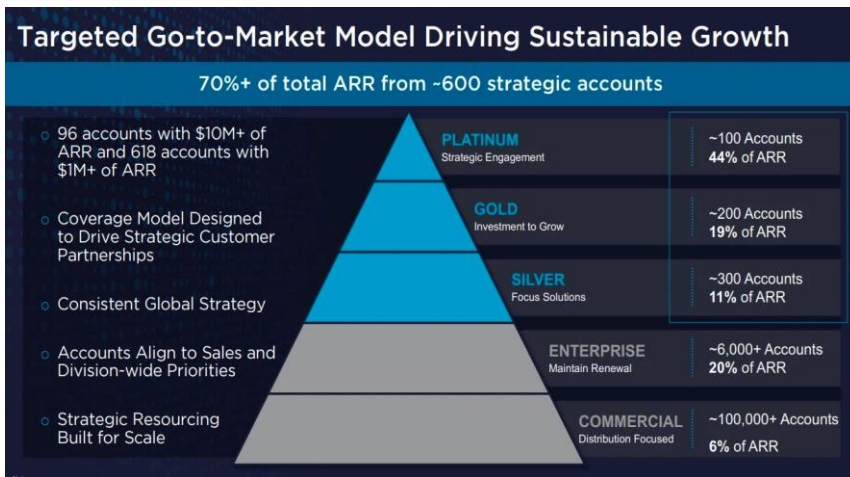
The Register

This article is more than 1 year old

## Broadcom's stated strategy ignores most VMware customers

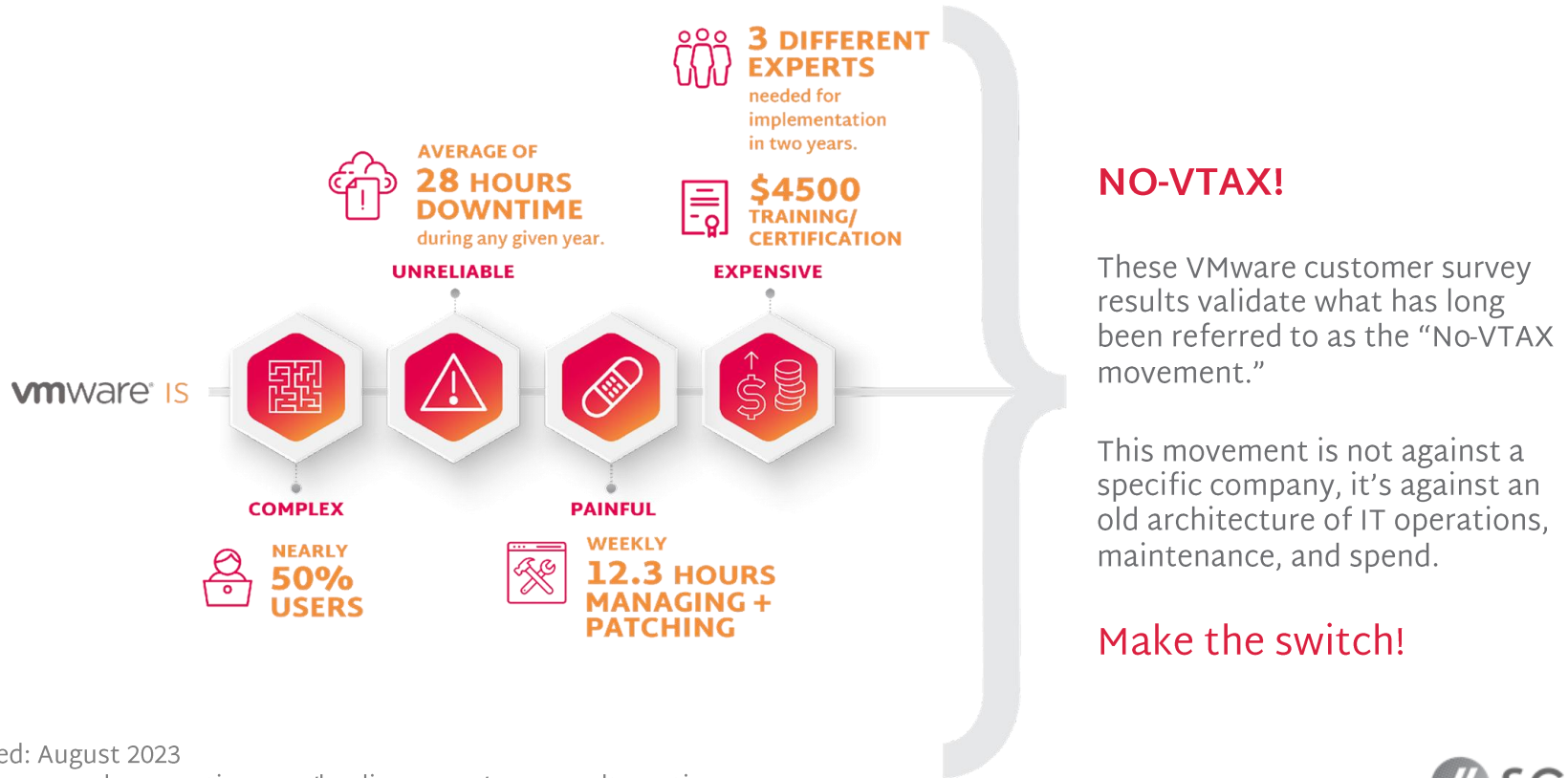
Focuses on 600 users, lets smaller outfits slide, trims R&D spend, slashes sales expenses

Simon Sharwood, APAC Editor Mon 30 May 2022 13:00 UTC



# VMWARE CUSTOMER SURVEY RESULTS

## VMWARE CUSTOMER SURVEY RESULTS





# WHY SCALE COMPUTING? INFRASTRUCTURE THAT CARES FOR ITSELF

AUTOMATICALLY IDENTIFIES, MITIGATES, AND CORRECTS ISSUES



AVAILABILITY



SIMPLICITY



EFFICIENCY



SCALABILITY





# ZERO-TOUCH PROVISIONING

SC//FLEET MANAGER SOLVES THE SCALE-OUT PROBLEM

SC//Fleet Manager with Zero-Touch Provisioning (ZTP) provides the shortest time from pilot to production!



---

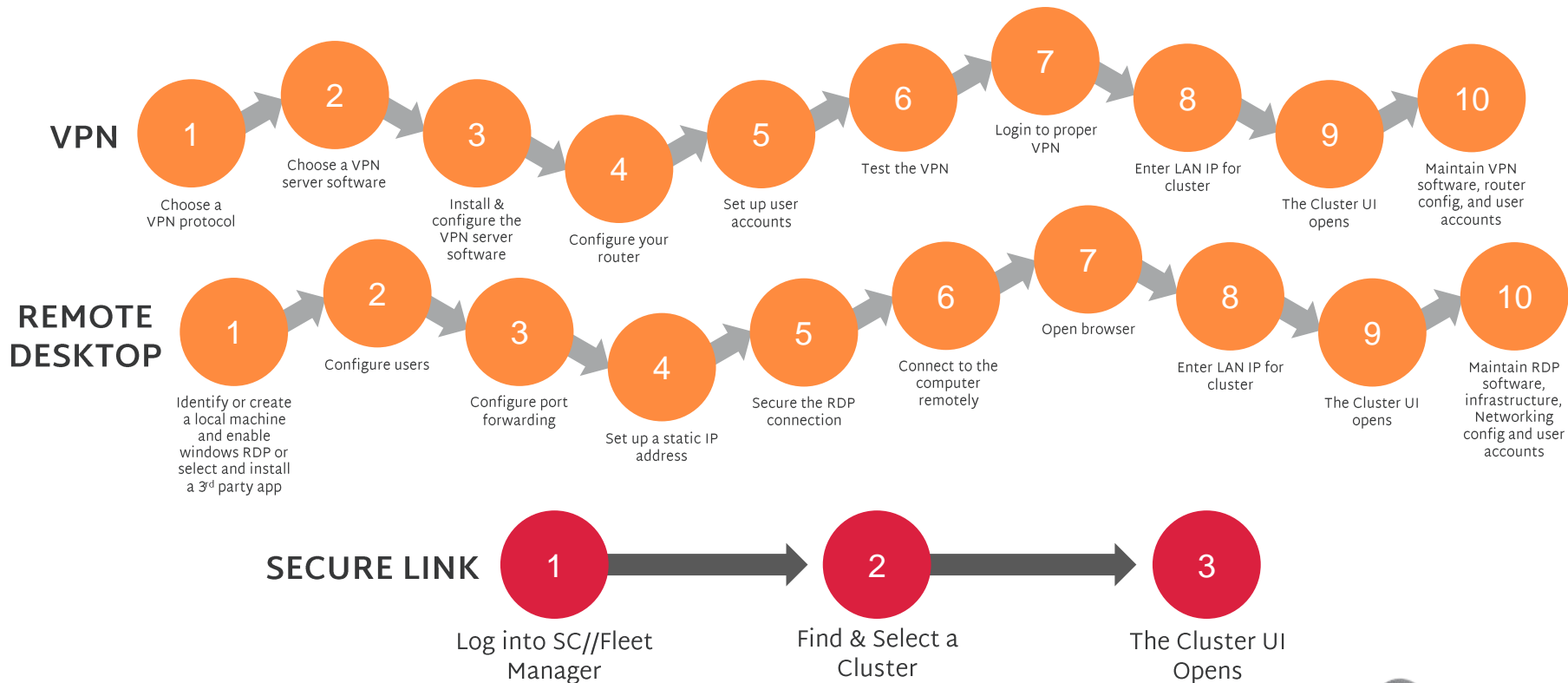
**Avoid:**

- Manual on-site configuration
- Configuration inconsistencies with many devices
- Potential for human error
- Sending expensive IT resources
- Wasting productivity better spent on other tasks
- Needing IT tools onsite (keyboard/monitor)



# SECURE LINK

ONE-CLICK WEB ACCESS FROM ANY MODERN BROWSER ON ANY DEVICE



In the background, while the user is getting the loading screen, SC//Fleet Manager sends a secure request to the cluster to open a tunnel to t.scalecomputing.com. The cluster opens an SSH tunnel to t.scalecomputing.com.



**SC/LE**  
COMPUTING

**WINNER**

In two categories for the fifth consecutive year!





# CRN'S ANNUAL REPORT CARD

## CONVERGED/HYPERCONVERGED INFRASTRUCTURE

	VMware	Dell	HPE	Nutanix	Scale Computing
Product Innovation	84.4	84.8	86.1	88.7	94.4
Support	73.6	76.1	77.2	80.6	89.8
Partnership	75.2	77.8	79.8	83.3	94.7
Managed and Cloud Services	74	71.6	76.5	79.9	86.8
Overall Score	77.1	77.7	80.2	83.4	91.5



# CRN'S ANNUAL REPORT CARD

## EDGE COMPUTING

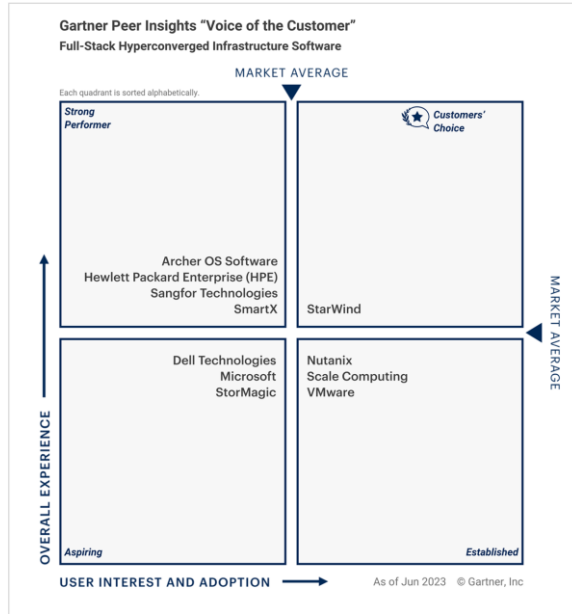
	HPE	Lenovo	Intel	Scale Computing
Product Innovation	81.3	92.7	83.4	93.7
Support	76.7	91.5	78.5	91.8
Partnership	75.3	93.4	80.9	94.5
Managed and Cloud Services	75	86.8	77.9	87.4
Overall Score	77.3	91.2	80.3	92



# GARTNER PEER INSIGHTS

## VOICE OF THE CUSTOMER 2023

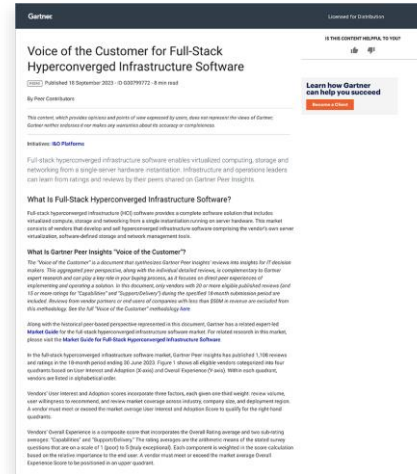
Figure 1. Voice of the Customer for Full-Stack Hyperconverged Infrastructure Software



Source: Gartner (September 2023)

Gartner

## Recognized, full-stack Hyperconverged Infrastructure Software you can trust!



Source: [www.scalecomputing.com/landing-pages/gartner-peer-insights-voice-of-the-customer](http://www.scalecomputing.com/landing-pages/gartner-peer-insights-voice-of-the-customer)





# THE NEW WAY TO VIRTUALIZE



- **All-In-One** (Server, Storage & Virtualization)
- Deploy in 30 Minutes
- Create VMs in seconds
- **Self-Healing** AI Platform
- Single Vendor Support
- No additional software to license
- Low **TCO**